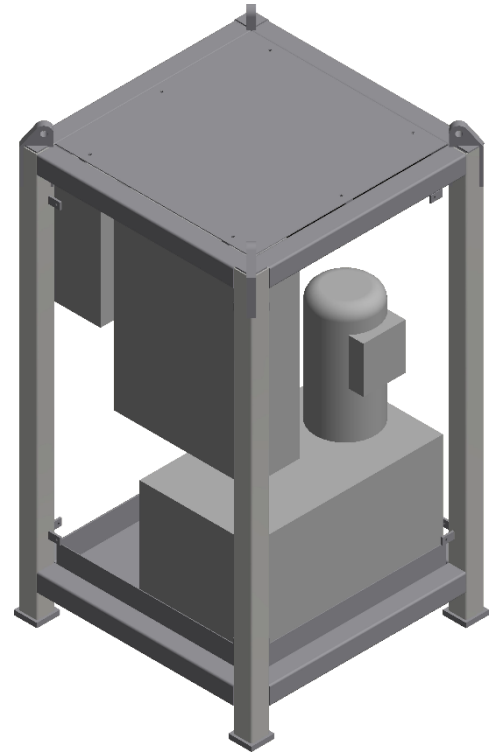
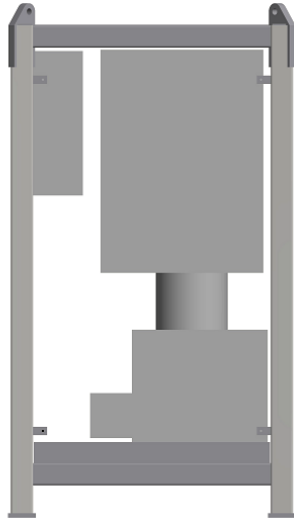
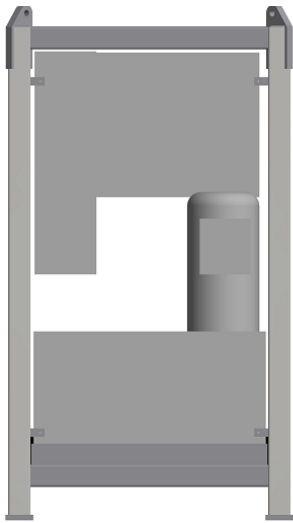


RENTAL ID 5190



Unit size: 1030 x 1030 x 1849 mm

Our Hydraulic Power Units (HPUs) are engineered for superior performance and reliability. Each unit is delivered with oil and certified lifting gear for lifting, ensuring easy and safe transportation and installation.

Features

- **Design:** Compact frame for use in challenging locations offshore. This ensures easy access for maintenance.
- **Hydraulic:** Hydraulic systems designed for use under demanding conditions.
- **Lifting:** Delivered with lifting system.

Technical specifications

- **Hydraulic systems:** Single pump with variable flow and configurate for load sense mode.
 - **Connection:** Quick mount and drip secure hydraulic connectors mounted in front of unit.
- **Electrical systems:** Electrical configurations for use in hazardous area zone 2 (offshore).
 - **Safety system:** Built with safety systems for secure use.
- **Area class:** For use in hazardous area zone 2 (offshore)

Certification

- **Lifting Gear:** Certified lifting gear included for secure lifting.
- **Documentation:** NORSOK Z-015 package



sales@kolos.no // +47 98 90 44 44

GENERAL

Owner	KOLOS Lifting & Inspection AS
Type and model	Hydraulic power unit 1 X 22KW EX // HPU 5190
Ambient conditions	Temperature: -20 to + 30 °C // Inertia: +/- 0.3 g horizontal, any direction, +/- 0.3 g vertical
Hazardous area	Zone 2

CODES / APPROVALS

CE marked	Yes (Machinery directive 2006/E42/EC)
ATEX	Yes (ATEX directive 94/9/EC).
Lifting	DNV 2.7-1
NORSOK	Z-015 (U99, normally unmanned)
Other	2004/108/EC (EMC), FEU, EN60079-14, EN61892, TPU, NEK400:2010

HYDRAULIC

Pumps	1 x variable axial piston pump
Flow and pressure	Up to 45 l/min // Max 280 bar
Tank	Hydraulic reservoir 200 l
Oil type and filter	Mineral oil, viscosity grade 32 // Hydraulic filter(s) 10 micron
Connections	SnapTite 71 series (drip-free connections)

ELECTRICAL (data for each pump)

Installed power (kW)	1 x 22 kW
Voltage	Up to 690 V
Current	41 A (400 V – 50 Hz) and 23,5 A (690 V - 60 Hz). Other: 440V 480V and 660V
Starting current	Approx 160 A

MECHANICAL

Size L x W x H (mm)	1030 x 1030 x1849
Weight (kg)	1090 kg



sales@kolos.no // +47 98 90 44 44